

The General

As played by General Guillaume Brune

Find out more about this object by entering **77.31A,B** on artsmia.org



Miss Charlotte

As played by Charlotte of France

Find out more about this object by entering **35.7.98** on artsmia.org



The Cardinal

As played by Cardinal Pietro Maria Borghese

Find out more about this object by entering **65.39** on artsmia.org



The Comtesse

As played by Comtesse d'Egmont Pignatelli

Find out more about this object by entering **2006.33** on artsmia.org



Mrs. Coustard

As played by Catherine Coustard

Find out more about this object by entering **77.26** on artsmia.org



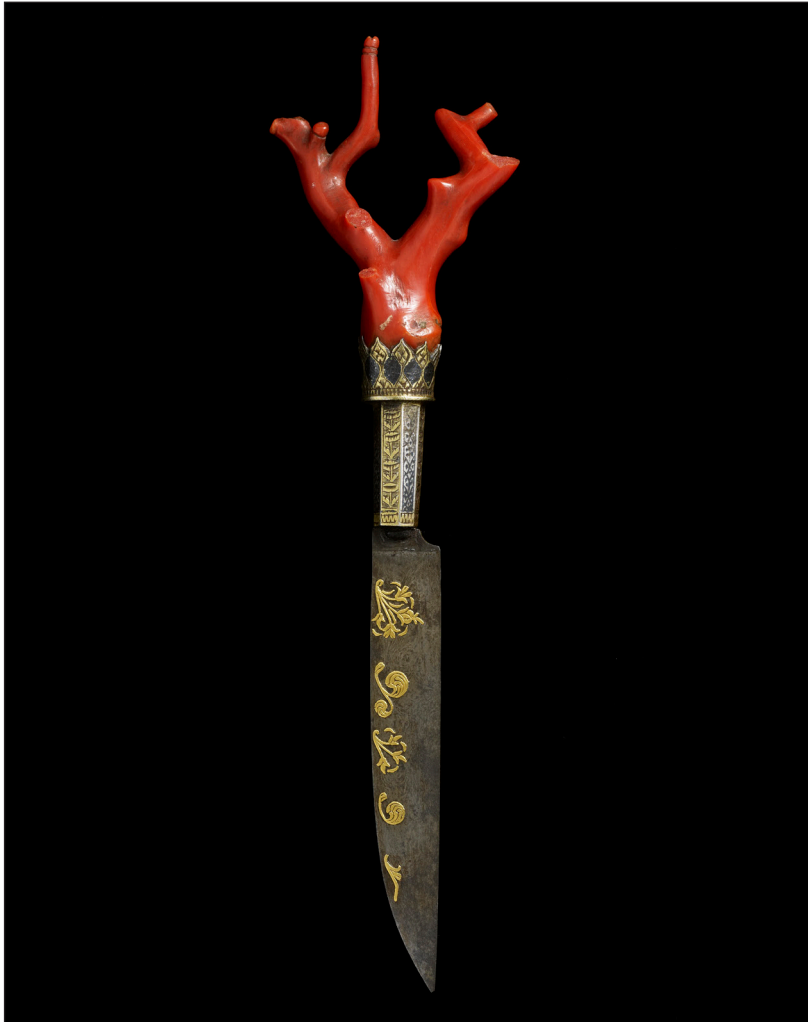
Minneapolis Institute of Art



“New Yorker” Electric Guitar

National Guitar Company, USA, c.1937

Find out more about this object by entering **98.276.287.1** on artsmia.org



Knife

Italy, 15th century

Find out more about this object by entering **2010.29.1** on artsmia.org



“Chrysanthemum” Candelabrum

Tiffany & Co., USA, 1891–1902

Find out more about this object by entering **62.80.2A, B** on artsmia.org



Wheel Lock Rifle

c. 1630

Find out more about this object by entering **97.39.2 A-C** on artsmia.org



“Silver Streak” Electric Iron

Corning Glass Works, USA, 20th century

Find out more about this object by entering **2003.92** on artsmia.org



Ballroom

Lidded Punch Bowl, France, c. 1867

Find out more about this object by entering **2000.10.1.1A,B** on artsmia.org



Dining Room

Charleston Dining Room, Gallery 337

Find out more about this object by entering **27.79** on artsmia.org

Minneapolis Institute of Art



Conservatory

Charleston Drawing Room, Gallery 336

Find out more about this object by entering **27.78** on artsmia.org

Minneapolis Institute of Art



Library

Queen Anne Room, Gallery 326

Find out more about this object by entering **31.58** on artsmia.org



Hall

Randolph Rogers, *The Lost Pleiad*, 1874,
Gallery 332

Find out more about this object by entering [acc#](#) on [artsmia.org](#)



Study

Georgian Room, Gallery 327

Find out more about this object by entering [acc#](#) on [artsmia.org](#)

Minneapolis Institute of Art



Lounge

MacFarlane Room, Gallery 328

Find out more about this object by entering **67.58.7** on artsmia.org

A large, bold, white number '6' is centered on a dark gray background. The number is stylized with a thick stroke and a slightly irregular, hand-drawn appearance. The top loop is open on the right side, and the bottom curve is smooth and rounded.A large, bold, white number '5' is centered on a dark gray background. The number is stylized with a thick stroke and a slightly irregular, hand-drawn appearance. The top horizontal bar is slightly slanted to the right, and the bottom curve is smooth and rounded. The middle vertical stroke is slightly offset to the left.

4

3

A large, bold, white number '2' is centered on a dark, solid background. The number is rendered in a clean, sans-serif font with a slight curve at the top and a flat base.A large, bold, white number '1' is centered on a dark, solid background. The number is rendered in a clean, sans-serif font with a slight curve at the top and a flat base.