

# Mia

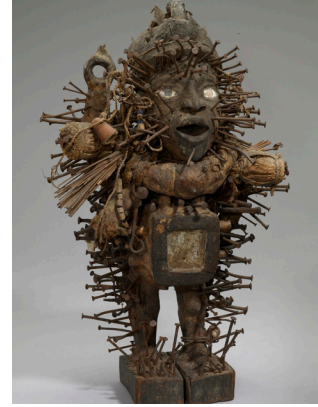
**Minneapolis Institute of Art**  
2400 Third Avenue South  
Minneapolis, Minnesota 55404

**Money tree**



China, 1st-2nd century, bronze and green glazed earthenware

**Power figure**



Kongo, Africa, 20th century, wood, natural fibers, glass, metal

**Art  
Adventure  
Cultural  
Reflections  
in Art**

# Mia

# Mia

**Minneapolis Institute of Art**  
2400 Third Avenue South  
Minneapolis, Minnesota 55404

**Money tree**



China, 1st-2nd century, bronze and green glazed earthenware

**Power figure**



Kongo, Africa, 20th century, wood, natural fibers, glass, metal

**Art  
Adventure  
Cultural  
Reflections  
in Art**

# Mia

# Mia

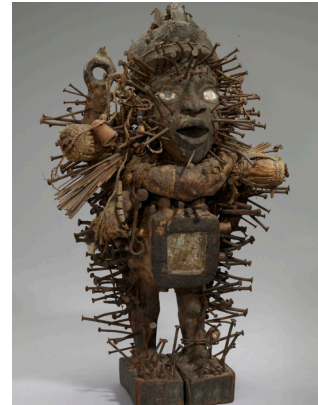
**Minneapolis Institute of Art**  
2400 Third Avenue South  
Minneapolis, Minnesota 55404

**Money tree**



China, 1st-2nd century, bronze and green glazed earthenware

**Power figure**



Kongo, Africa, 20th century, wood, natural fibers, glass, metal

**Art  
Adventure  
Cultural  
Reflections  
in Art**

# Mia

**Ear spoons**



Chimú, Peru, 1150-1450, gold alloy

**The Wash**



Clementine Hunter, 1950s, oil on board

**Portrait of José Mojica**



Macena Barton, 1928, oil on canvas

**Princess Charlotte of France**



Jean Clouet the Younger, 1522,  
oil on cradled panel

**Ear spoons**



Chimú, Peru, 1150-1450, gold alloy

**The Wash**



Clementine Hunter, 1950s, oil on board

**Portrait of José Mojica**



Macena Barton, 1928, oil on canvas

**Princess Charlotte of France**



Jean Clouet the Younger, 1522,  
oil on cradled panel

**Ear spoons**



Chimú, Peru, 1150-1450, gold alloy

**The Wash**



Clementine Hunter, 1950s, oil on board

**Portrait of José Mojica**



Macena Barton, 1928, oil on canvas

**Princess Charlotte of France**



Jean Clouet the Younger, 1522,  
oil on cradled panel